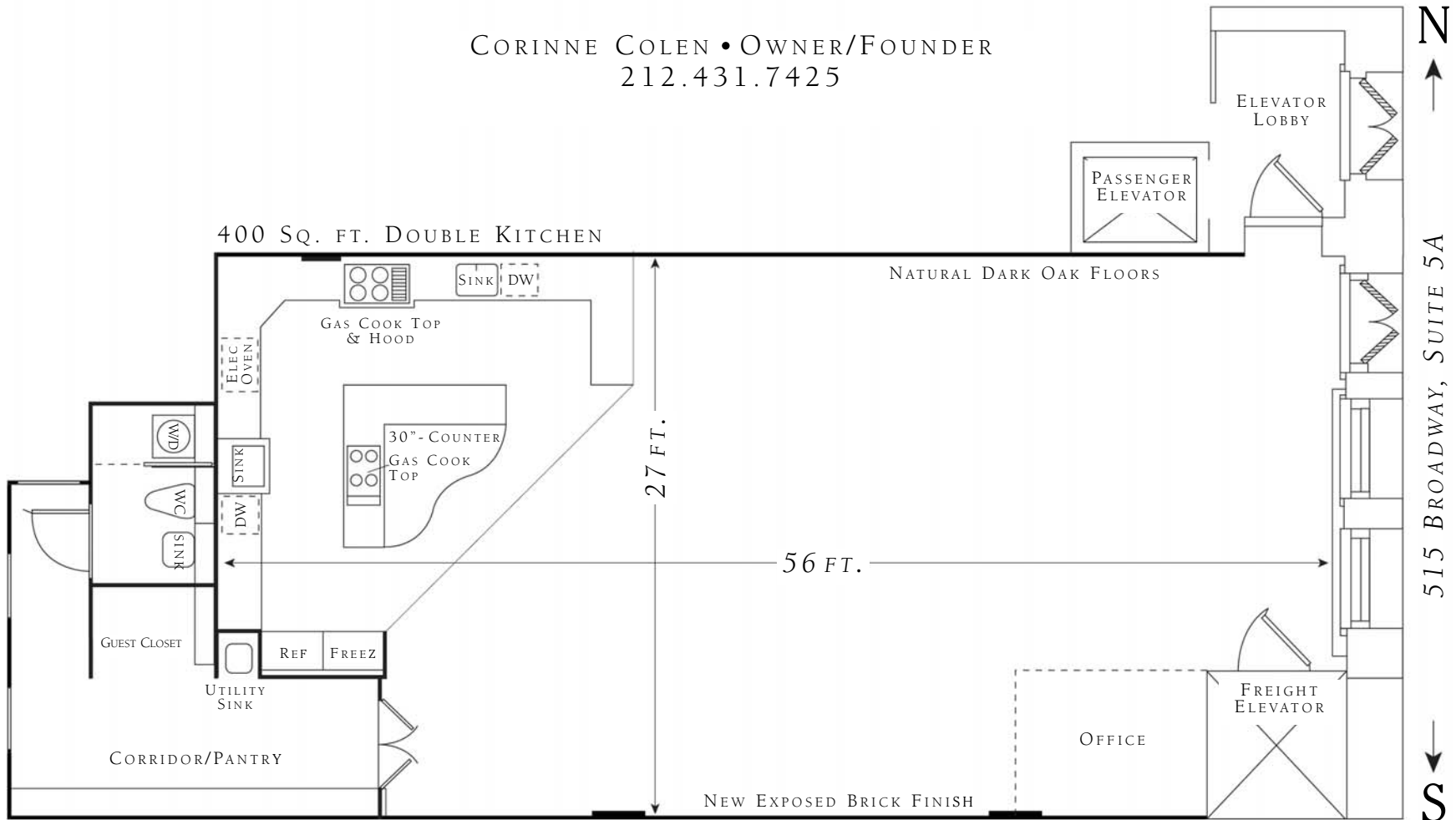




CORINNE COLEN • OWNER/FOUNDER
212.431.7425



- 400 SQ. FT. GOURMET DOUBLE KITCHEN
- TERRA COTTA TILE FLOOR IN KITCHEN
- BLACK GRANITE COUNTER TOPS
- 200 AMPS
- FREIGHT ELEVATOR
- AIR CONDITIONING
- ALL NATURAL MAPLE CABINETRY

- OPTICAL MYLAR MIRROR FOR OVERHEAD SHOTS
- ROLL-AWAY TABLE FOR CLOSE-UP SHOTS
- BUTCHER BLOCK COUNTER CAN BE HOISTED AWAY
- LIGHTING GRID
- ALL-CLAD COOKWARE & WUSTHÖF KNIVES
- ALL THERMADOR & SUB-ZERO APPLIANCES
- FULLY STOCKED KITCHEN FOR ALL COOKING NEEDS